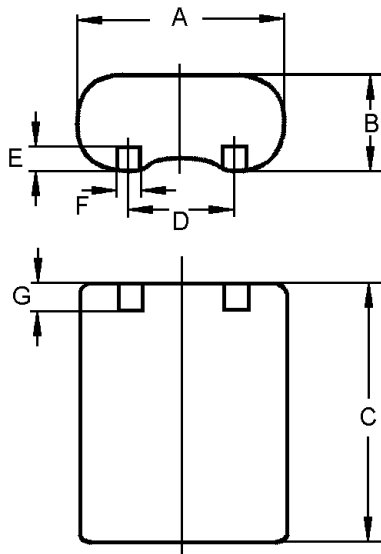


Type Designation	6203
Designation IEC	2CR5
System	Li-MnO <sub>2</sub>
Shelf Life *	10 years
Nominal Voltage [V]	6
Typical Capacity C [mAh]	1400
Permissible Temperature Range	- 20 °C ... 60 °C
Weight, approx. [g]	42
Volume [ccm]	23



Dimensions [mm]

min: max:

A	32.5	34.0
B	16.0	17.0
C	43.0	45.0
D	15.7	16.3
E	3.5	4.5
F	3.5	4.6
G	3.5	4.5

**Typical Capacities (at 20°C)**

Discharge Type	Load	End Voltage[V]	4.4	4.0
Service Output Test 24H/D, 7D/W	200 Ω	Time [h]	55	51
		Capacity [Ah]	1.54	1.40
		Energy [Wh]	8.60	7.8
Discharge Type	Load	End Voltage[V]	4.0	3.1
Photo Test / Pulse 3s/30s, 7D/W	900 mA	Time [c]	1810	1670
		Capacity [Ah]	1,35	1,26
		Energy [Wh]	6,79	6.0

**No publication or circulation of data to third parties without consent of VARTA Consumer Batteries**

\* In consideration of typical loss of capacity at storage and application.