

<'18 TV Main Board Repair Guide>

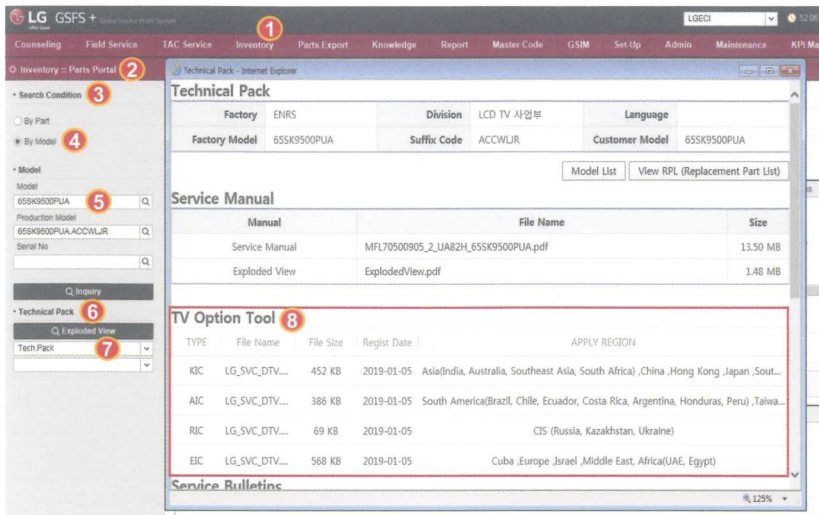
1. How to Change Tool Option

1) Download Tool Option

► **Overseas** : Download Tool Option Data from GSFS to USB(Storage device)

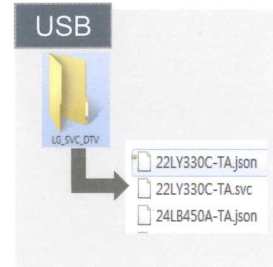
Path : GSFS → ① Inventory → ② Parts Portal → ③ Search Condition → ④ By Model →

⑤ Input Model(Any Model) → ⑥ Technical Pack → ⑦ Select Tech.Pack → ⑧ TV option Tool



2) Unzip Tool Option data

► Unzip the "LG_SVC_DTV.zip" file in USB storage [Folder name] LG_SVC_DTV



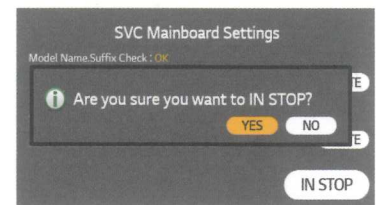
3) Connect the USB (tool option data) to the TV.



4) Input 'Model name.suffix' and 'Serial number'

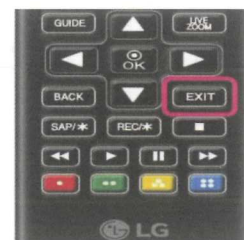
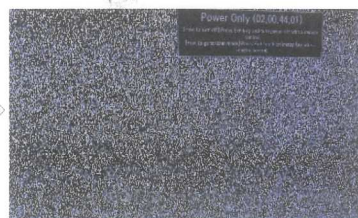
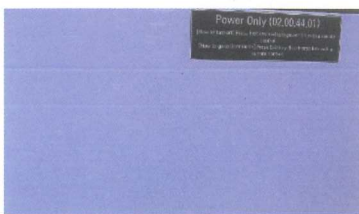


5) Press IN STOP → Select YES



2. Trouble shooting guide

1) When the TV screen displays white blank pattern, press "EXIT key".



2) If suffix has 6 digits, replace the 7th character with a blank space ("—" → " ")

