

# Sol Tech N°0018

## PSU Modifications for Light bar issue 08-L301HA4-PW200AX

**Products involved:** List in Annex-1 and Annex-2.

**Defect:** The TV has No backlight or Backlight issue.

**Solution:**

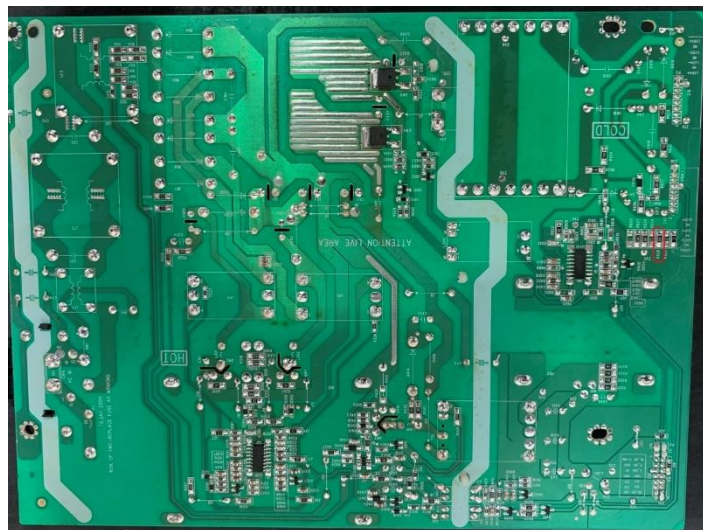
- All light bars from the TV must be replaced.
- After the replacement of light bars, ASP needs to modify the PSU as follows:

PSU Part Number	Original backlight current	Required change on PSU	Modified backlight current
08-L301HA4-PW200AB	300mA	Change R628 from 10Ω to 22Ω	246mA
08-L301HA4-PW200AA	300mA	Change R628 from 10Ω to 22Ω	246mA

Please change the original resistor from the position R628 on PSU.

- From 19-CD0100-FTX (10Ω) to 19-CD0220-JTX (22Ω).

Here’s the picture of resistor location in power supply board.



**Reporting instructions:**

- Declare the P/N of the kit with the fixed EW TST0120018 in the field “EW No” of the parts section.
- Report the Iris Main Service: 13B - No, partial or uneven backlight.
- Report the iris Defect: N – Defective electrical component/ Module.
- Report the Iris Repair: A2 – Module replacement.

**Annex-1:**

PSU PN	BOM
08-L301HA4-PW200AB	H3-65D29GR-WE1AWAA
	H3-65D29GR-WE1BWAA
	H7-65D29GR-WE1AWAA
	H7-65D29GR-WE1BWAA
	P7-65D29GR-WE1AWAA
	P7-65D29GR-WE1BWAA
	P7-65D29GR-WE1BWAP
	P7-65D29GR-WE1BWPP
	SA-65D29GR-WE1AWAA
	SA-65D29GR-WE1BWAA
	SA-65D29GR-WE1BWAP

PSU PN	BOM
08-L301HA4-PW200AA	H3-65D29FZ-EU1DWAA
	H3-65D29FZ-WE1AWAA
	H3-65D29FZ-WE1BWAA
	H3-65D29FZ-WE1CWAA
	H3-65D29FZ-WE1DWAA
	H3-65D29FZ-WE1EWAA
	H7-65D29FZ-WE1AWAA
	H7-65D29FZ-WE1BWAA
	H7-65D29FZ-WE1CWAA
	H7-65D29FZ-WE1DWAA
	P3-65D29FZ-WE1AWAA
	P3-65D29FZ-WE1CWAA
	P3-65D29FZ-WE1CWAP
	P7-65D29FZ-WE1CWAA
	P7-65D29FZ-WE1CWAP
	SA-65D29FZ-WE1BWAA
	SA-65D29FZ-WE1CWAA
SA-65D29FZ-WE1DWAA	

**Annex-2:**

PSU PN	Model
08-L301HA4-PW200AB	65UC6306
	65UC6316
	65UC6326
	65UT6006
	U65P6006
	U65P6066

PSU PN	Model
08-L301HA4-PW200AA	65UC6406
	65UC6426
	65US6016
	U65P6026
	U65P6046