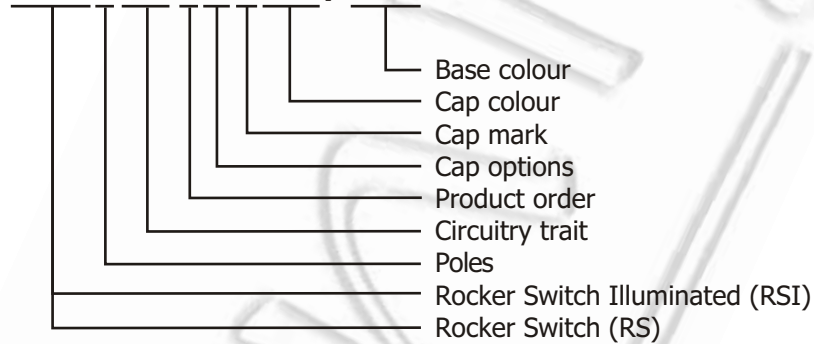


Specification:

- 1) Rating (if not described next to the switch):
20 A 125 VAC; 15 A 250 VAC
- 2) Contact Resistance: 35 mW max.
- 3) Insulation Resistance: 500 VDC 100 MW min.
- 4) Dielectric strength: 1500 VAC, 1 minute
- 5) Operating temperature: -30°C ~ +80°C
- 6) Electric Life: 10000 cycles

RSI1011A3BK/WH



CIRCUITRY TRAIT

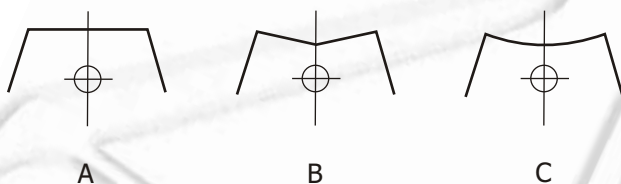
01	ON	-	OFF
11	(ON)	-	OFF
02	ON	-	ON
03	ON	OFF	ON
23	(ON)	OFF	(ON)

() Indicates Momentary

CAP COLOUR

RD	red
GN	green
OR	orange
BU	blue
WH	white
BK	black
YL	yellow

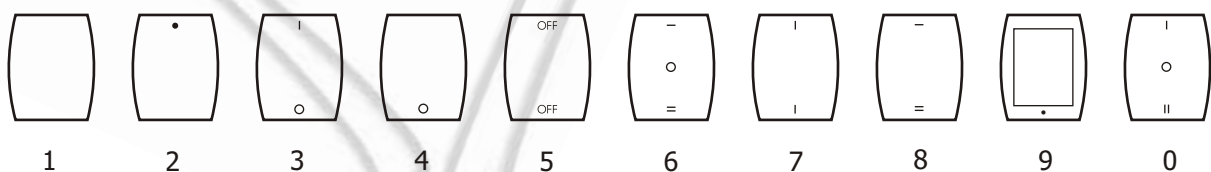
CAP OPTIONS



BASE COLOUR

GY - gray
 BU - blue
 WH - white
 omitted when standard colour (black)

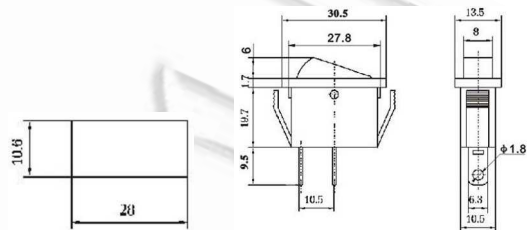
CAP MARKING



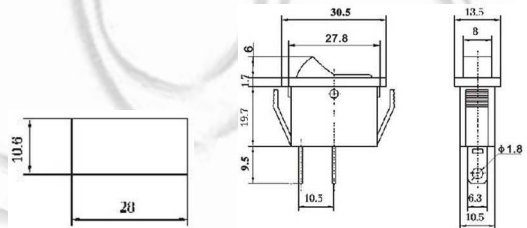
Ninigi



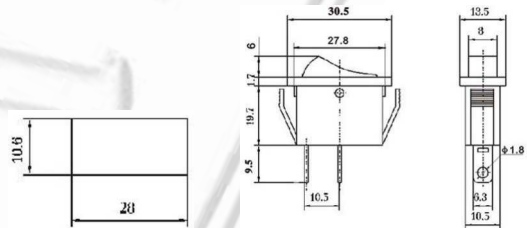
RSI1011A ON-OFF
SPST 2P



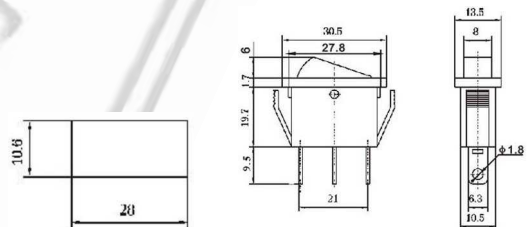
RSI1011B ON-OFF
SPST 2P



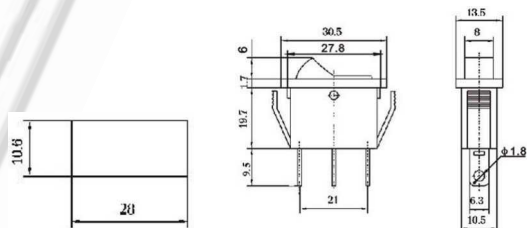
RSI1011C ON-OFF
RSI1111C (ON)-OFF
SPST 2P



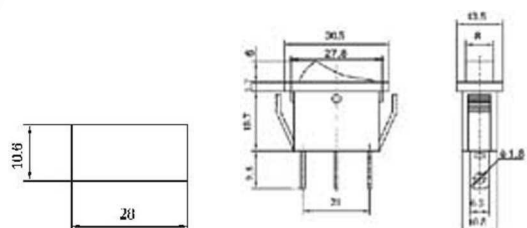
RSI1011A ON-OFF
SPST 3P
RSI1021A ON-ON
SPDT 3P



RSI1011B ON-OFF
SPST 3P
RSI1021B ON-ON
SPDT 3P



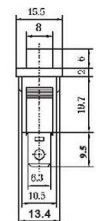
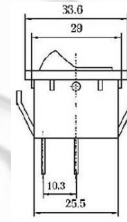
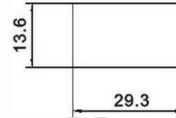
RSI1011C ON-OFF
SPST 3P
RSI1021C ON-ON
SPDT 3P



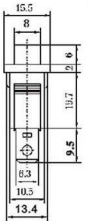
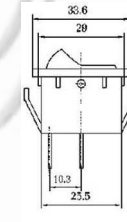
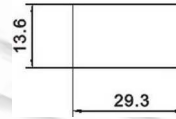
Ninigi



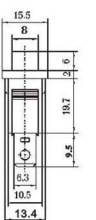
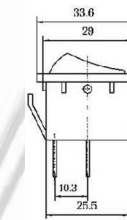
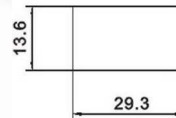
RS1012A ON-OFF
SPST 2P



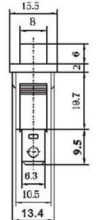
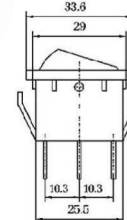
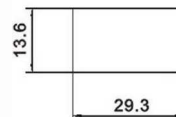
RS1012B ON-OFF
SPST 2P



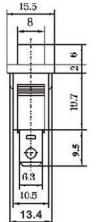
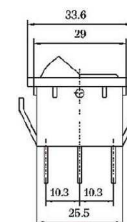
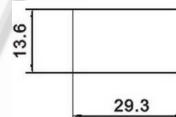
RS1012C ON-OFF
SPST 2P



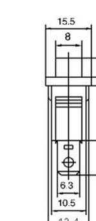
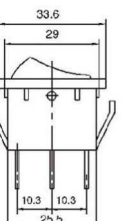
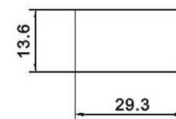
RS1012A ON-OFF
SPST 3P
RS1022A ON-ON
SPDT 3P



RS1012B ON-OFF
SPST 3P
RS1022B ON-ON
SPDT 3P



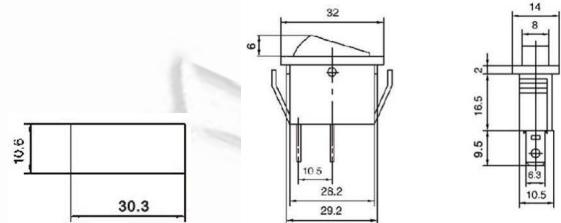
RS1012C ON-OFF
SPST 3P
RS1022C ON-ON
SPDT 3P



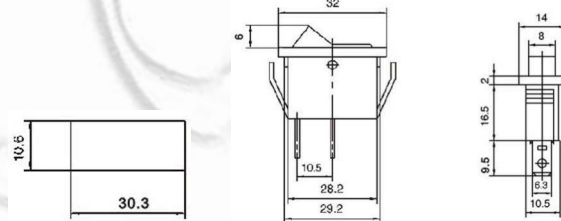
Ninigi



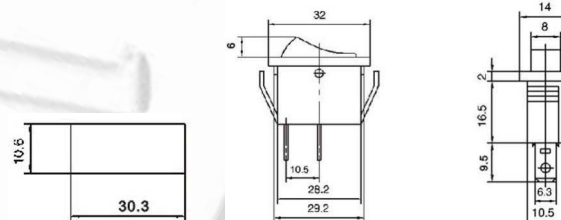
RS1013A ON-OFF
SPST 2P



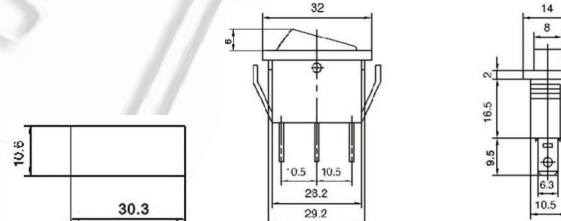
RS1013B ON-OFF
SPST 2P



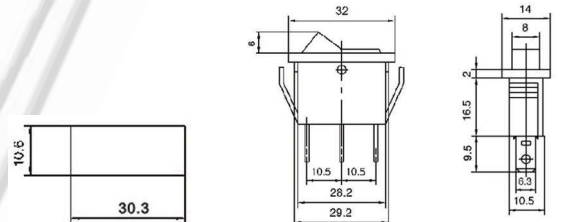
RS1013C ON-OFF
SPST 2P



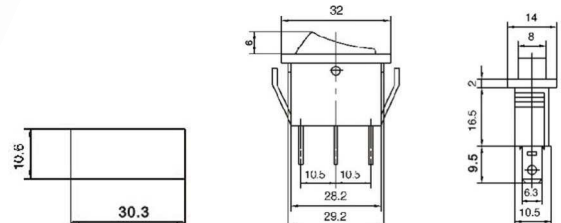
RSI1013A ON-OFF
SPST 3P
RS1023A ON-ON
RS1033A ON-OFF-ON
SPDT 3P



RSI1013B ON-OFF
SPST 3P
RS1023B ON-ON
RS1033B ON-OFF-ON
SPDT 3P



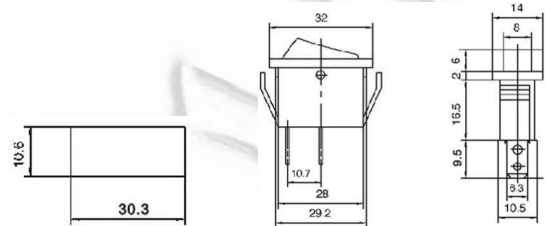
RSI1013C ON-OFF
SPST 3P
RS1023C ON-ON
RS1033C ON-OFF-ON
SPDT 3P



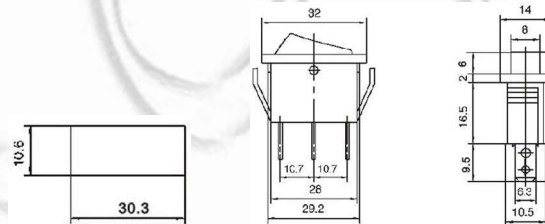
Ninigi



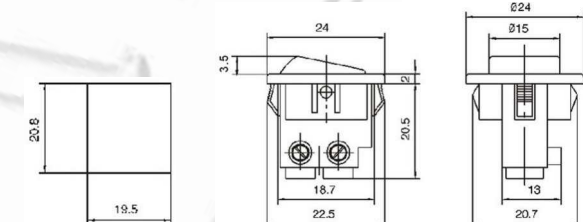
RS1015A ON-OFF
SPST 2P



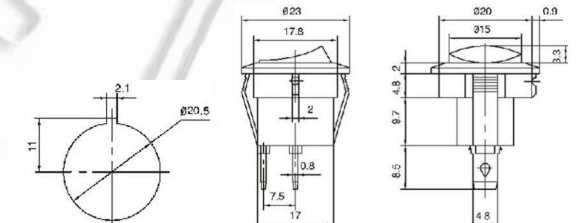
RSI1015A ON-OFF
SPST 3P
RSI025A ON-ON
SPDT 3P



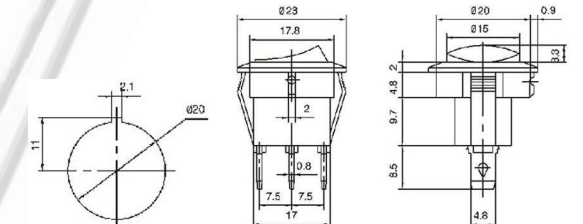
RS1017C ON-OFF
10 A 125 VAC; 6 A 250 VAC
SPST 2P



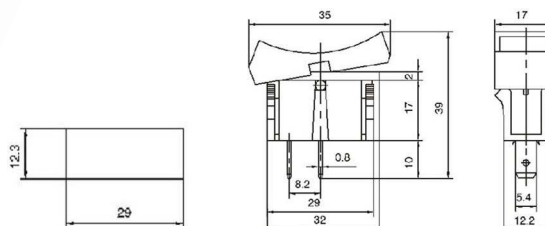
RS1018C ON-OFF
13 A 125 VAC; 6.5 A 250 VAC
SPST 2P



RSI1018C ON-OFF
SPST 3P
RSI028C ON-ON
RSI1038C ON-OFF-ON
SPDT 3P
13 A 125 VAC; 6.5 A 250 VAC



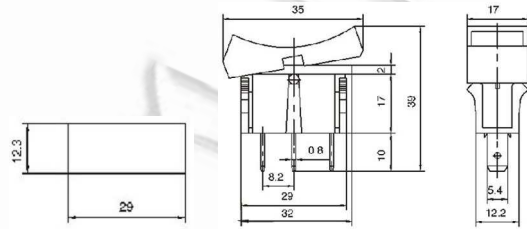
RS10110C ON-OFF
5 A 125 VAC; 2 A 250 VAC
SPST 2P



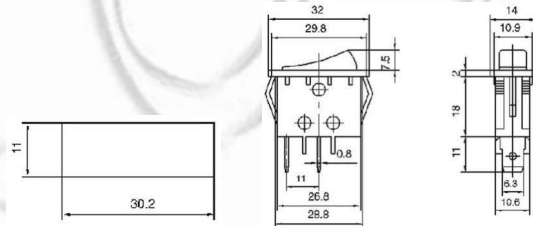
Ninigi



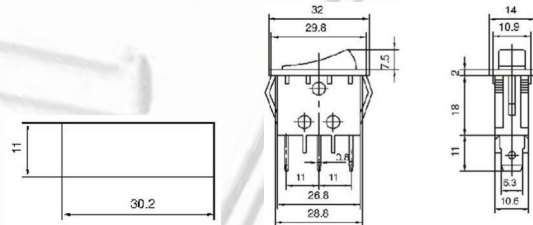
RS10210C ON-ON
5 A 125 VAC; 2 A 250 VAC
SPDT 3P



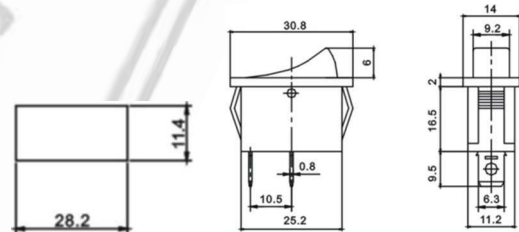
RS10111C ON-OFF
SPST 2P



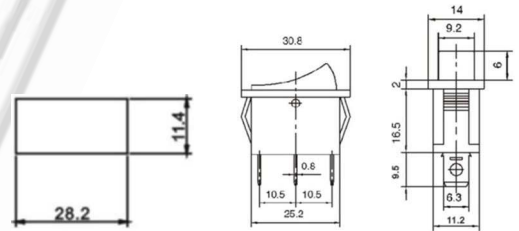
RSI10111C ON-OFF
SPST 3P
RS10211C ON-ON
RS10311C ON-OFF-ON
RS12311C (ON)-OFF-ON
SPDT 3P



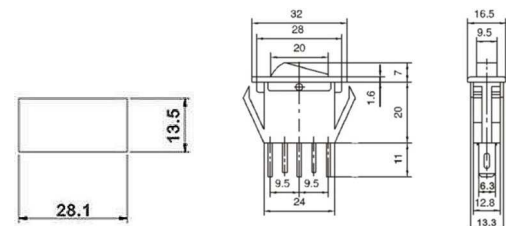
RS101216C ON-OFF
SPST 2P



RS10216C ON-ON
RS10316C ON-OFF-ON
SPDT 3P



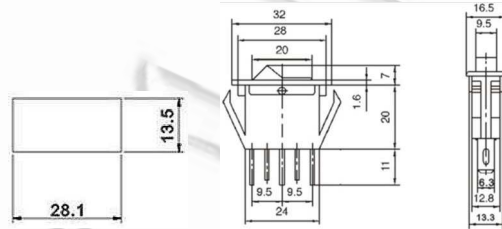
RSI12A ON-OFF
15 A 125 VAC; 10 A 250 VAC
SPST 3P



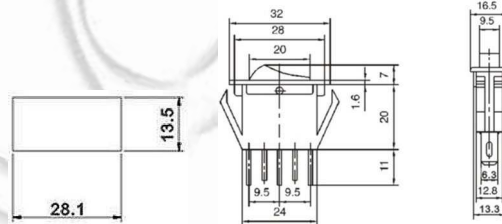
Ninigi



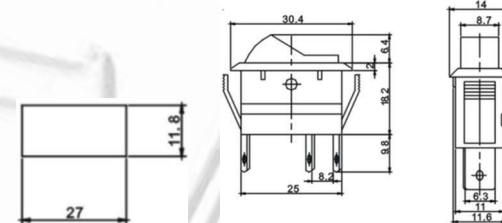
RSI12B ON-OFF
15 A 125 VAC; 10 A 250 VAC
SPST 3P



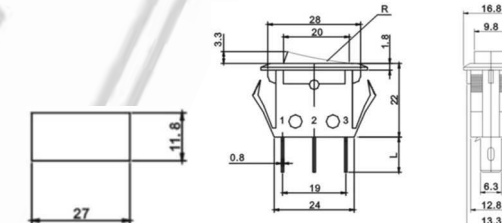
RSI12C ON-OFF
15 A 125 VAC; 10 A 250 VAC
SPST 3P



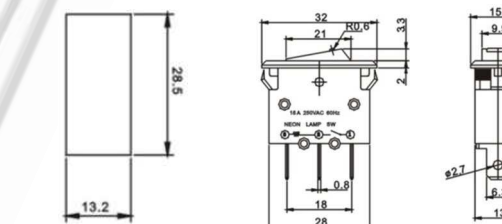
RSI13B ON-OFF
15 A 125 VAC; 10 A 250 VAC
SPST 3P



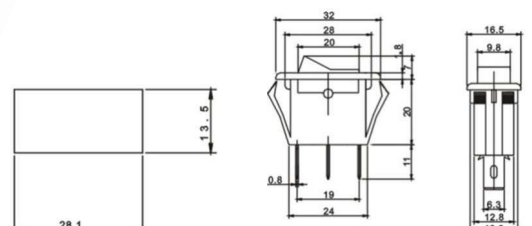
RSI14C ON-OFF
15 A 125 VAC; 10 A 250 VAC
SPST 3P
L=7.5, 11



RSI1R1 ON-OFF
With Built-in Circuit Breaker
Rating: 15 A 250 VAC / 125 VAC
Circuit Breaker Rating: 30 A
Trip time 3~20 Sec.
SPST 3P



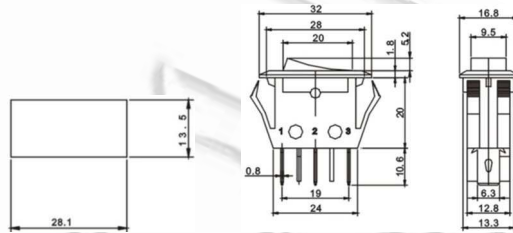
RSI15B ON-OFF
15 A 125 VAC; 10 A 250 VAC
SPST 3P



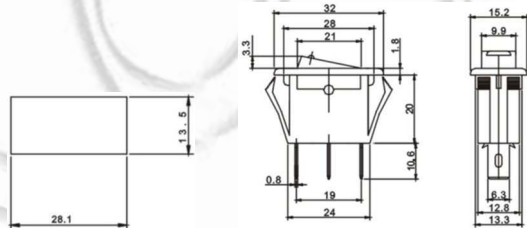
Ninigi



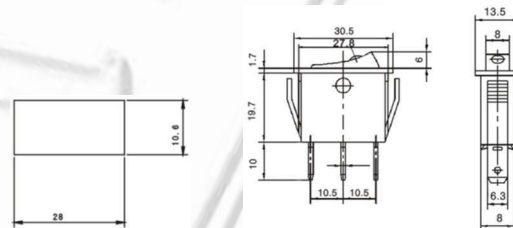
RSI16C ON-OFF
15 A 125 VAC; 10 A 250 VAC
SPST 3P



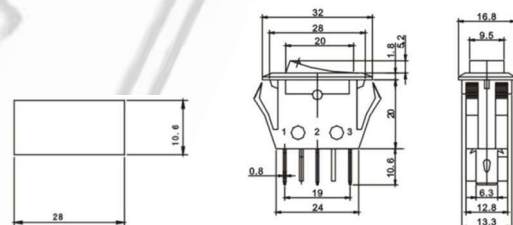
RSI17A ON-OFF
15 A 125 VAC; 10 A 250 VAC
SPST 3P



RSI101E1C ON-OFF
20 A 125 VAC; 15 A 250 VAC
SPST 3P



RSI1E2C ON-OFF
15 A 125 VAC; 10 A 250 VAC
SPST 3P



RSI101E3A ON-OFF
15 A 125 VAC; 10 A 250 VAC
SPST 3P

